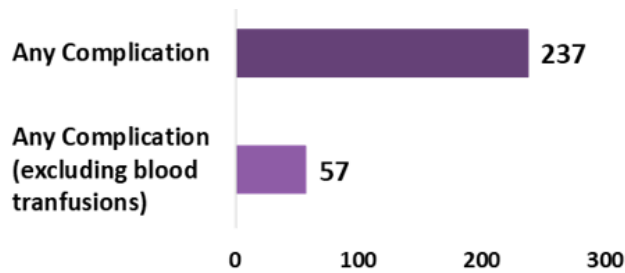


CY 2023 Severe Obstetric Complications for 2024 Public Reporting Electronic Clinical Quality (eCQM) Measure Factsheet

2024 Complication Measure Results

Risk-Standardized Complication Rate (RSCR)



Observed National Complication Rates (per 10,000 deliveries)

Where can I find my hospital's results?



- CMS publicly reports measure results through the **data catalog** on [Data.CMS.gov](https://data.cms.gov) for hospital-level results.
- **Public reporting preview reports** display info about your results on all reported measures.
- **Hospital-Specific Reports (HSRs)** show detailed, discharge-level data on your results.

Please note that HSRs are shared with hospitals through the [User Interface in the HQR system](#). To access your results, please contact your Hospital Quality Reporting (HQR) Security Administrator/Official (SA/SO).

How are the measures calculated?



Cohort

Includes patients:

- Between 8 years to under 65 years
- Hospitalized due to delivery for live births and stillbirths with ≥ 20 weeks 0 days gestation completed at delivery
- Who did not have COVID-19 with a respiratory complication



Outcome

The measure has 2 outcomes:

- 1) Any complications:** Severe medical (i.e., sepsis, eclampsia, respiratory, cardiac, etc.) and procedural (i.e., hysterectomy) complications, including death.
- 2) Any Complications excluding blood transfusion only cases:** Any complications (above) but excludes cases where blood transfusion was the only complication.



Risk Adjusted

The measures are adjusted for differences in **risk variables** such as:

- Maternal age
- Preexisting conditions and pregnancy characteristics
- Laboratory tests and vital signs upon hospital arrival
- Long-term anticoagulant use
- Social risk factors



Data

Includes **deliveries** that were discharged between:

January 1, 2023 to December 31, 2023



Did you know...

*In FY 2026, the Severe Obstetric complications measure (PC-07) will be **mandatory in the IQR Program** for hospitals to report using CY 2024 deliveries.*

Results are stratified by race & ethnicity and payer.

Want more information?

- For **additional methodology information**, please see the **Methodology Report** on the [eCQI Resource Center](#)
- Additional information, including an FAQ, can be found on [QualityNet](#) > **Hospitals – Inpatient** > **Measures** > **eCQMs** > **Resources**
- Send your technical measure questions on [JIRA](#) > create an issue ticket or [General Questions](#) > **Program** > **IQP** - Inpatient Quality Reporting > **Topic: eCQMs**

